

**SAFETY 180° INFRARED BEAM  
PHOTO SENSOR HW-06  
USER MANUAL**



**Product Description**

**12-24V infrared beam sensors photocell for gate openers**  
12-24V infrared beam sensors photocell are widely used in parking lots and automatic gate openers to notify the control board for approaching vehicles or people and avoid damage.

**SPECIFICATIONS FOR 12-24V Infrared Beam Sensors Photocell**

Power Supply	AC/ DC 12-24V	Working Temperature	-20°C~+60°C
Working Current	Transmitter: ≤ 30mA Receiver: ≤ 50mA	Angle of Emission	180°
Infrared Wavelength	890nm	Usage	For Automatic Gate Openers
Operating Distance	≥ 12M		

**Specification**

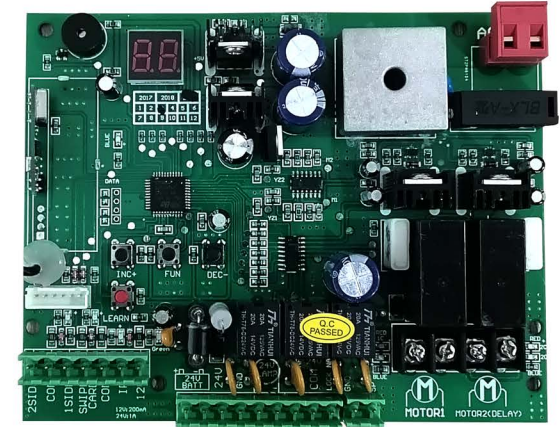
1. Working Voltage: 12~24VAC/DC
2. Working Current(24VDC):  
Emitter: ≤8mA  
Receiver: ≤30mA
3. Angle of Emission:  $\pm 5^\circ$
4. Receiving Range: ≥12m
5. Angle Adjustment of PCBA:  $\pm 180^\circ$
6. Working Temperature: -20°C~+60°C
7. Relay Contact Loading Capacity: 1A/30VDC

**AVAILABLE CONTROL BOARDS FOR HW-06**

**EG-12**



**EG-22A**



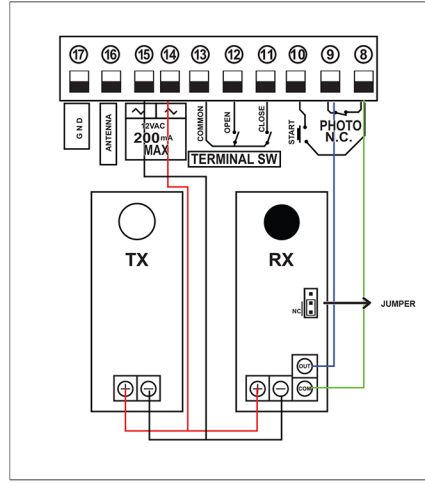
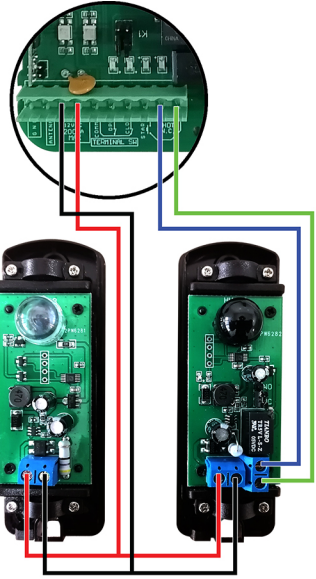
**EG-32**



**EGB-02**

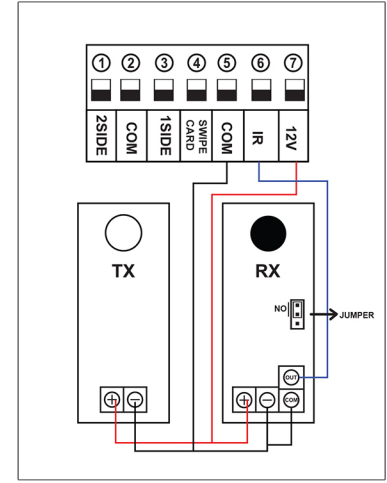
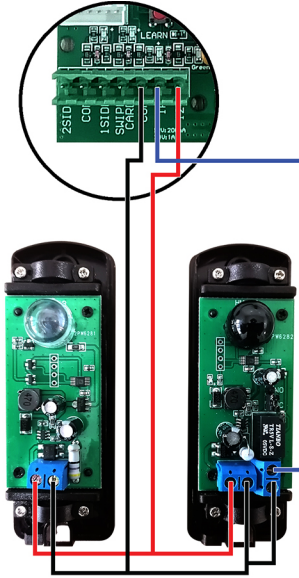
- 12V AC
- 12V AC
- OUT
- COM

# EG-12 (SL-22013)



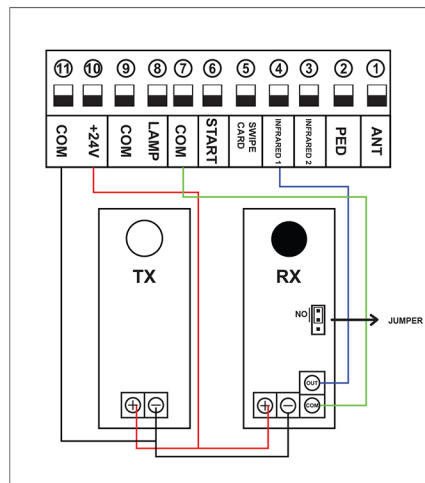
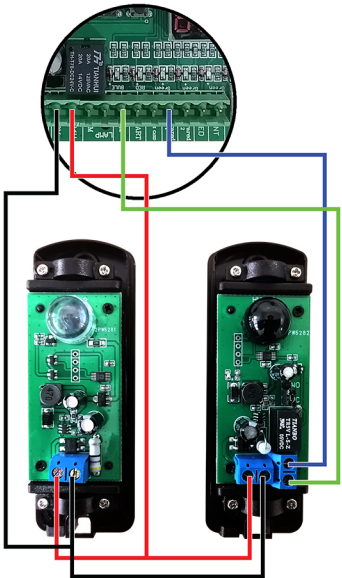
- +12
- COM
- OUT

# EG-22A (ALL SW)



- +24
- COM
- INFRARED 1
- COM

# EG-32 (SL-2405)



- VCC
- COM
- PH
- COM

# EGB-02 (SL-2208,22013,2202)

