



ALTECH RC-12BG

Remote Controller Manual

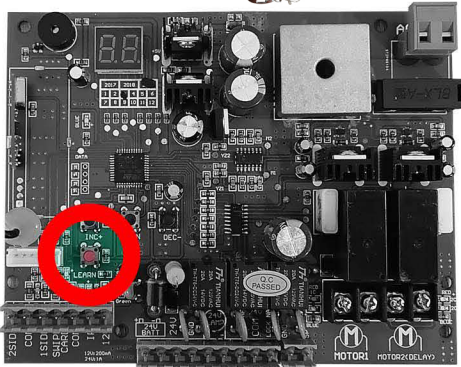


FOR ALL SWING GATE OPENERS

HOW TO PROGRAM A REMOTE CONTROL ON EG-22A

All Swing Gate Openers (SW-01, SW-01A, SW-02, SW-02L, SW-02SL, SW-03, SW-03A, SW-03L, SW-04)

- 1.) **PRESS** the **LEARN button**  in the control board and **PRESS** any button in the **Remote Controller** 



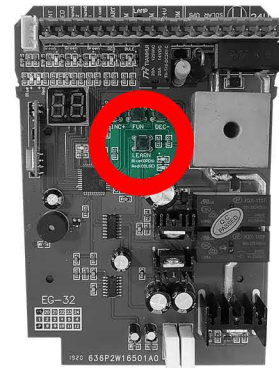
Altech EG-22A Control Board - LEARN button (encircled by red circle)

FOR SL-2405

HOW TO PROGRAM A REMOTE CONTROL ON EG-32

For Sliding Gate Opener SL-2405 model only

- 1.) **PRESS** the **LEARN button**  in the control board and **PRESS** any button in the **Remote Controller** 



Altech EG-32 Control Board - LEARN button (encircled by red circle)

FOR SL-2208

FOR SL-22013

FOR SL-2202

HOW TO PROGRAM A REMOTE CONTROL ON EGB-02

For Sliding Gate Openers SL-2208, SL-22013, and SL-2202 models

- 1.) **PRESS** the **LEARN button**  in the control board and **PRESS** any button in the **Remote Controller** 

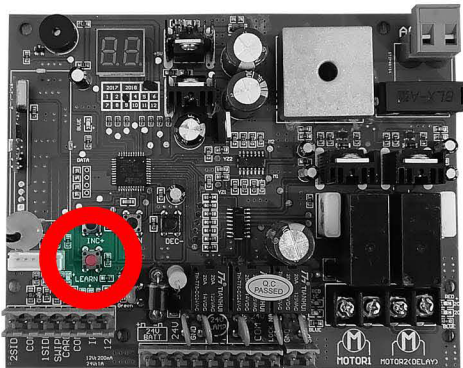


Altech EGB-02 Control Board - LEARN button (encircled by red circle)

HOW TO RESET A REMOTE CONTROL ON EG-22A

All Swing Gate Openers (SW-01, SW-01A, SW-02, SW-02L, SW-02SL, SW-03, SW-03A, SW-03L, SW-04)

- 1.) **LONG PRESS** the **LEARN button**  for 5-6 seconds until a beep sounds.

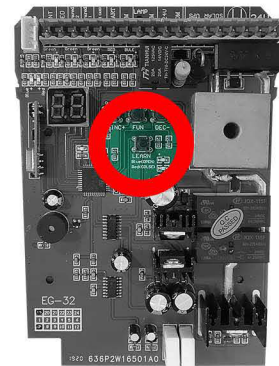


Altech EG-22A Control Board - LEARN button (encircled by red circle)

HOW TO RESET A REMOTE CONTROL ON EG-32

For Sliding Gate Opener SL-2405 model only

- 1.) **LONG PRESS** the **LEARN button**  for 5-6 seconds until a beep sounds.



Altech EG-32 Control Board - LEARN button (encircled by red circle)

HOW TO RESET A REMOTE CONTROL ON EGB-02

For Sliding Gate Openers SL-2208, SL-22013, and SL-2202 models

- 1.) **LONG PRESS** the **LEARN button**  for 5-6 seconds until a beep sounds.



Altech EGB-02 Control Board - LEARN button (encircled by red circle)