

# WA435

Electric Tailgate for Mitsubishi Montero 2016-2019 with Upper Latch  
USER MANUAL



YOUR KEY TO AUTOMATION



## **ELECTRIC TAILGATE FOR MITSUBISHI PAJERO (MONTERO) 2016+**

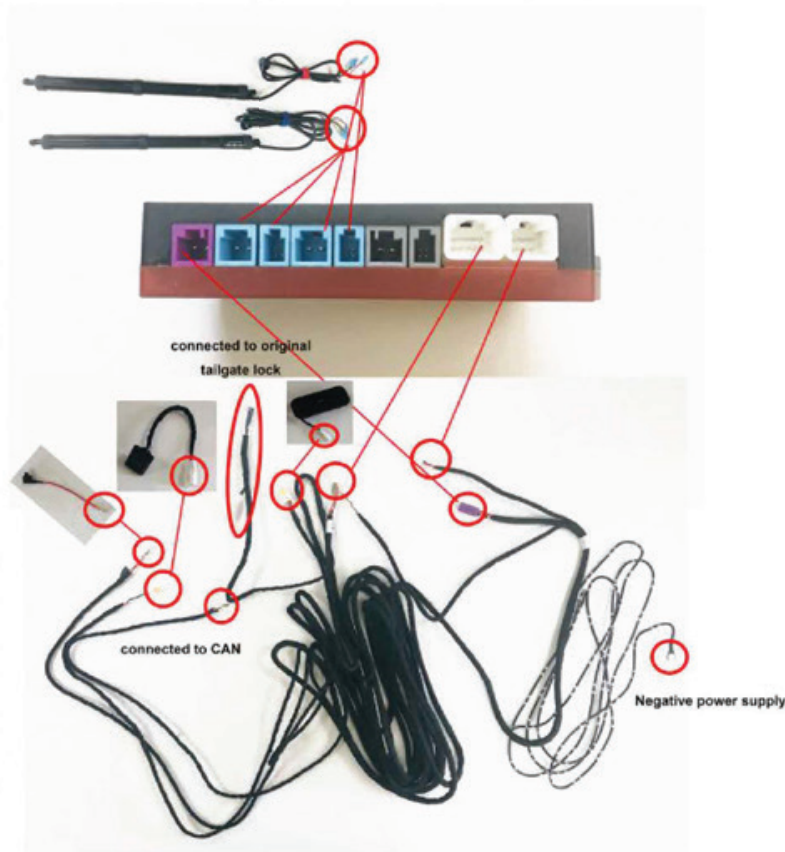
### **Installation Precautions**

- For safety and to ensure the normal use of the product, please install it by a professional installer. Do not disassemble the machine without permission to avoid damage to the machine and accident.
- Before installing the product, start the engine first, check the function display of the car dashboard, the operation of the buttons in the car is normal, and the surface of the car is not scratched. If you have any questions, please report to car owner in time.
- Check whether the tailgate opens and closed normally, check whether the lights are normal.
- Turn off the engine and prepare related tools.
- Installer should first remove the metal objects and other hard objects on their bodies to prevent damage to the car seat or interior during installation.
- During the installation process, the removed automobile components should be put away to avoid scratching the instrument panel in the car. Debris left in the wiring should be disposed of in time and not left in the car. The joint must be insulated to prevent short circuit.
- According to our wiring method, avoid affecting the moving parts of the car during the wiring process, such as the steering wheel drive shaft,

accelerator and brake pedal and other vehicle control parts. Each wiring harness needs to be fixed after being routed to prevent it from coming loose.

- Please connect each wiring harness according to our wiring method (Noted the position of the ground wire).
- Do not insert or remove the connected plug while the power is on, otherwise the host or accessories may be damaged during plugging and unplugging.
- If the key fob has a tailgate open button, press this button for 3s to open and close the tailgate. If don't have, you need to press the unlock button 3 times to open and close the tailgate.

### **Wiring Diagram**



**Installation Instruction**

<p>1. Car appearance.</p>	<p>2. Remove the electric struts.</p>
<p>3. Remove the middle panel trim.</p>	<p>4. Remove the tailgate trim board.</p>



5. Remove the original car bracket and OEM struts.



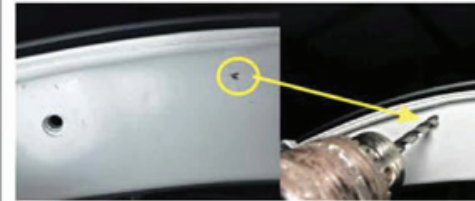
6. Use our screw to fix our bracket ("L" is left, "R" is right)



7. Remove the hall head.



8. Use our 3 mm drill to make a hole. (As shown in the picture).



9. Remove the bracket and then punch a hole with a 9mm driller.



10. In the punched position, rivet with a rivet gun.



11. As shown in the picture.



12. Install our round head screw and flat head screw.



13. Remove the original bracket and then use our screws to fix it.



14. Install our electric struts ("L" is left, "R" is right).



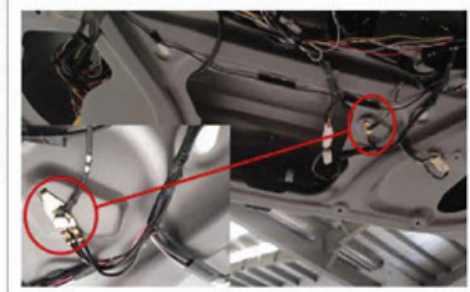
15. Drill a hole (16mm) to pass through the strut wire.



16. Remove the original lock, then install our electric upper suction lock.



17. Our plug is mated with the original car lock plug.



18. Connect the ground wire to a screw as shown.



19. Remove the original lock ring.



20. Install our lock ring.

	 <p>Take power appliances</p> <p>Electric tailgate insurance (SOA)</p> <p>Insert the location of the original car insurance (no insurance is not required)</p> <p>Power input</p> <p>Take power appliance schematic</p> <p>Electric tailgate insurance</p> <p>Insert the location of the original car insurance</p> <p>Input Output</p>		
<p>21. Remove the trim panel as shown in the figure.</p>	<p>22. Find a 20A fuse, then connect our power cord to the fuse box.</p>	<p>25. Route diagram.</p>	<p>26. Routing the wire. Pass the wire harness through the fellows.</p>
			
<p>23. Install our front switch button.</p>	<p>24. Connected to our OBD socket under the cab.</p>	<p>27. Plug the plugs into the control box and then fix it.</p>	<p>28. Install our tailgate switch button.</p>



29. Before restore all trim panel, please power on and close the tailgate by hand. Then use the key fob to test it.

### Function Description

After turning on, the door must be closed manually and the function can be used normally.

**Note:** Do not use screwdriver or other tools to lock the secondary lock as a door closing, otherwise a series of problems such as abnormal door opening and closing.

#### 1. Control mode of door opening and closing

(1) Remote control door opening and closing: Press the remote control unlock key 3 times (some models press the trunk key for a long time) to control the

trunk.

**Note:** When pressing the unlock key, press 3 times at a constant speed within 4 seconds.

(2) The original driver of the trunk picks the key: Control the opening and closing of the trunk.

**Note:** The control mode is the same as that before installation, and will not take effect until the vehicle is unlocked.

(3) Front key/central control unlock key: Press the front key for about 15s to control the opening and closing of the trunk; If the front key is not installed, press the central control unlock key of the original car 3 times to control the opening and closing of the trunk.

**Note:** The function of opening the trunk by the front key will only take effect in the state of flameout or P gear, and the function of closing the trunk will take effect at any time. The functions of opening and closing the trunk by the central control unlock key will only take effect under the flameout state.

(4) Trunk rear button: Press to control the trunk to close.

#### 2. Anti-pinch function

In the process of opening and closing the door, if obstructions are encountered, the trunk will immediately stop to avoid accidents.

### 3. Buzzer reminder

(During the process of opening and closing the trunk, there are corresponding sound reminders at different stages. When the electric absorption is abnormal, the buzzer will give an alarm)

A. After the electro-suction lock is completed, the beeper will "beep" four times quickly, indicating that the electro-suction is normally locked in place at the secondary level.

B. After the completion of the electro-suction, the buzzer does not sound, indicating that the electro-suction is normal and the secondary lock is not in place.

C. After the electro-suction or spit out, hear a long cry of the buzzer for about 10 seconds, indicating the electro-suction failure (it may be that the electro-suction is stuck or not in good contact).

### 4. Electro-suction function

In the process of closing the trunk, it has the characteristics of stable speed, low sound and the like, so that the user experience is more comfortable.

### 5. Height setting function

The rear key adjusts the opening height of the trunk: When opening the door, manually adjust the trunk to the ideal height. Press the rear key for a long time

and release it after hearing a long sound of the buzzer. The memory of the trunk height is successful. The trunk will open to this position next time.

(5) Note: The set height cannot exceed the preset height, otherwise it may cause the door to be unable to open and close normally.