



ALTECH BB-02

Battery Back-up Set Manual

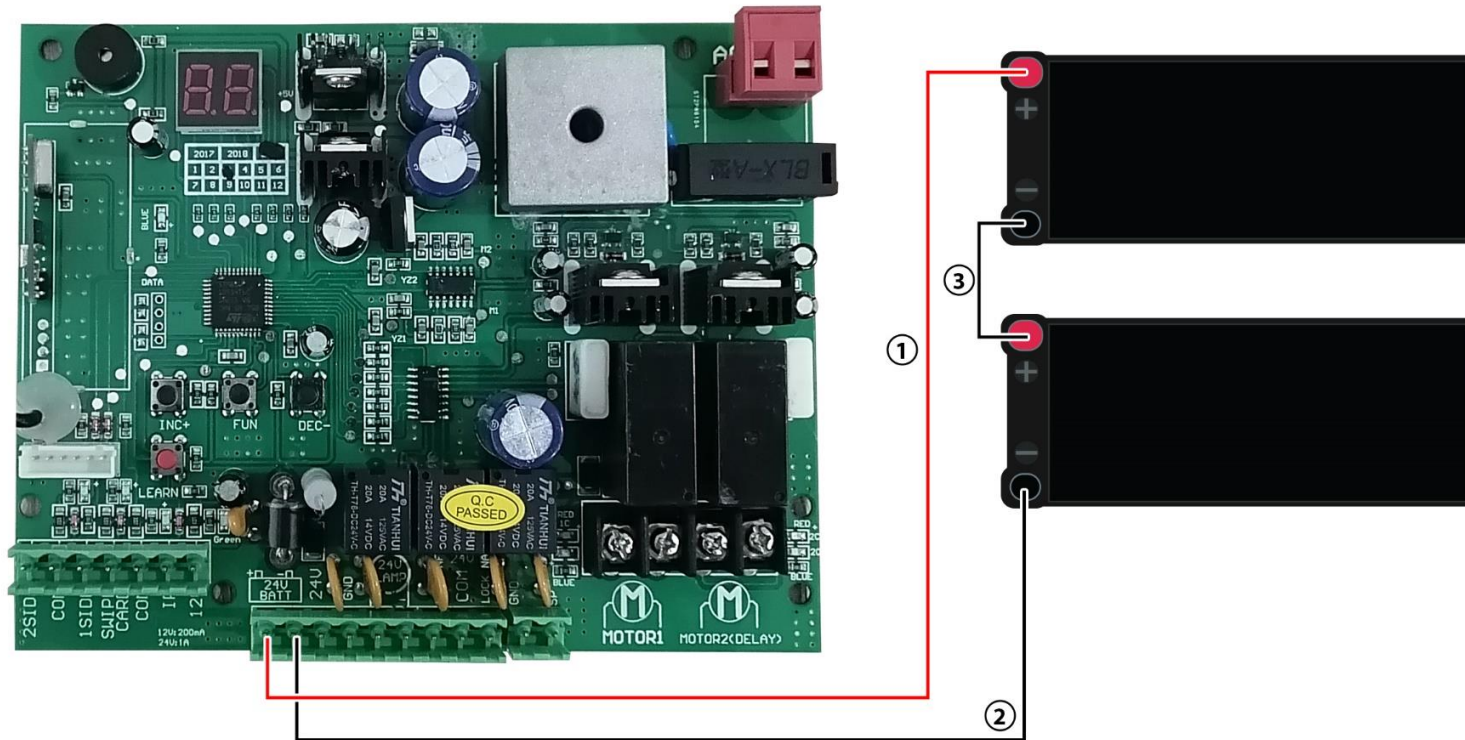


FOR ALL SWING GATE OPENERS

HOW TO CONNECT BATTERY BACK UP SET ON EG-22A

All Swing Gate Openers (SW-01, SW-01A, SW-02, SW-02L, SW-02SL, SW-03, SW-03A, SW-03L, SW-04)

- 1.) Connect the red wire ● from the **positive terminal** of the first battery to the **positive 24V** socket in the **EG-22A** control board.
 - 2.) Then, connect the black wire ● from the **negative terminal** of the second battery to the **negative 24V** socket in the **EG-22A** control board.
 - 3.) Lastly, connect the second black wire ● from the **negative terminal** of the first battery to the **positive terminal** of the second battery.
- * Steps can be any order though*



- + (Positive)
- - (Negative)

▲ EG-22A Control Board for Swing Gates with close-up view of wires-to-sockets connection.