




YOUR KEY TO AUTOMATION 


SETTINGS FOR WI-FI MODULE

ALTECH AUTOGATE INT. PHILIPPINES INC.
B6 L28 Aphrodite St., Villa Olympia 6
San Pedro, Laguna 4023

@Altech Autogate | @Altech Enterprise

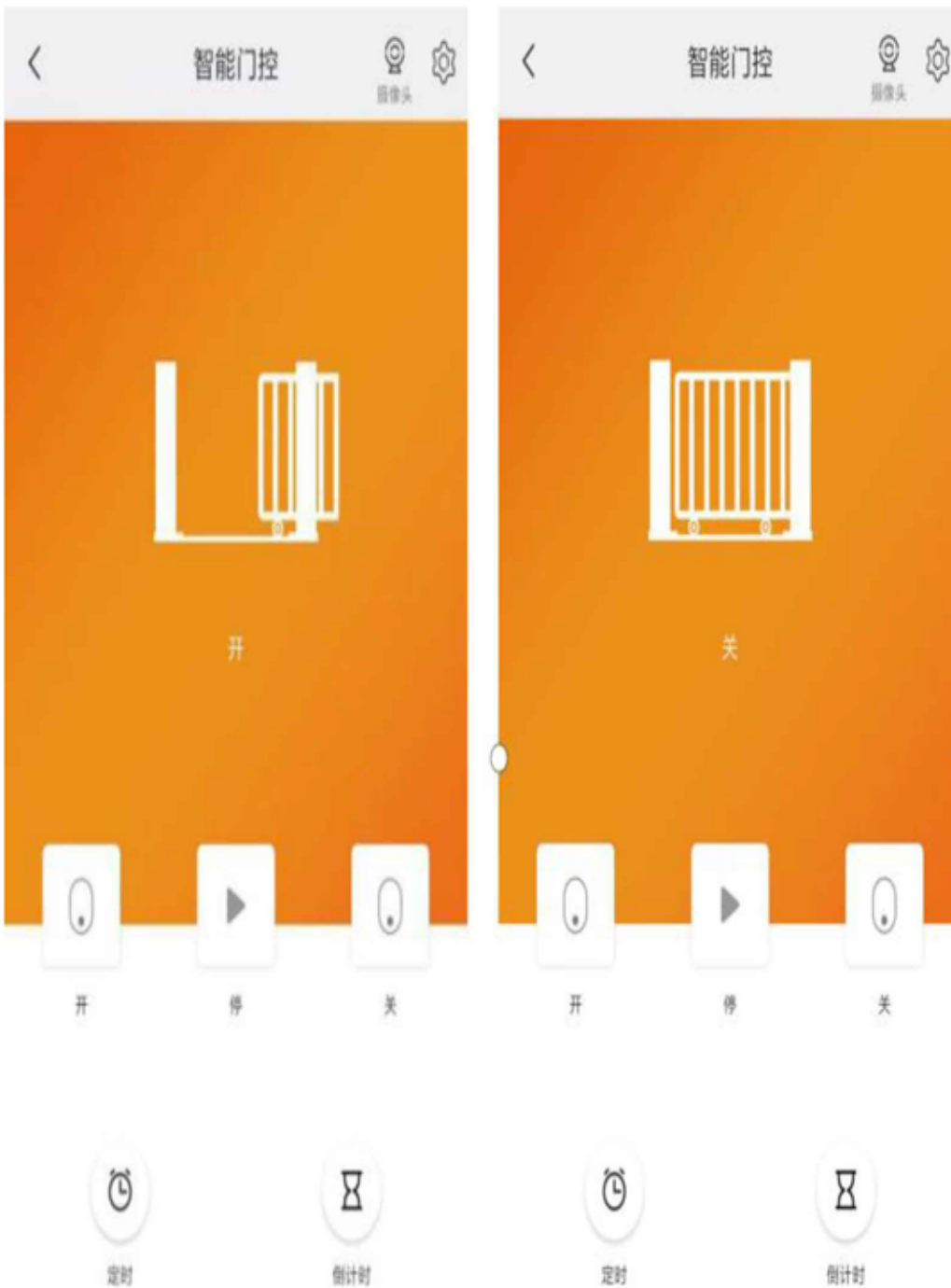


 +63 917 870 9928
+63 917 182 0156

 (02) 8398-5669

 autogate.ph@gmail.com

 www.altech.ph



1. Download
(1)Xhouse IOT APP

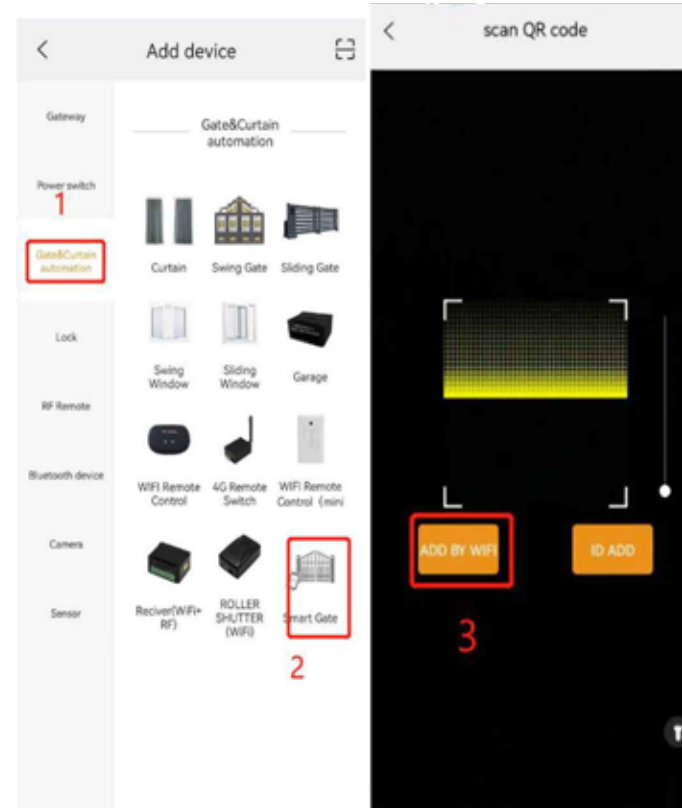


FOR Android & IOS

- (2) Search "Xhouse-IOT" on Google play, search "XHOUSE-IOT" on APP Store for downloading APP.
- (3) Register and login in APP.

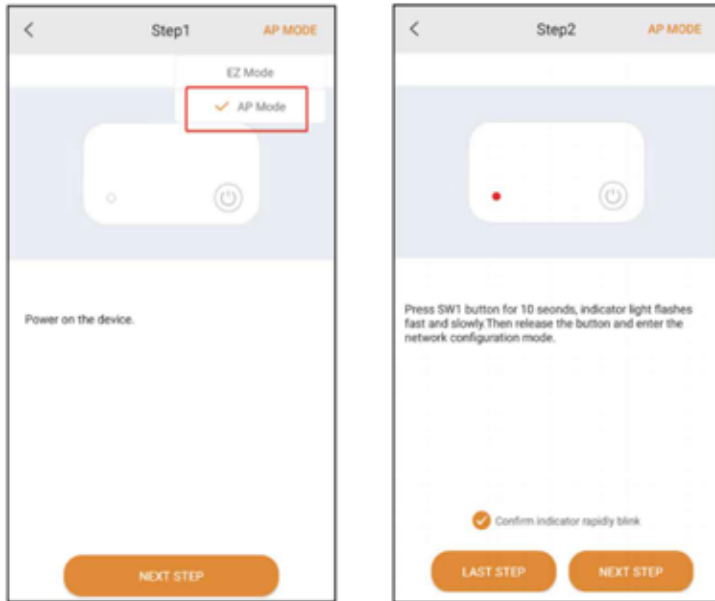
2.Add device:

- a. Add device —select "Gate&Curtain automation" —select "Smart Gate"—select "ADD by wifi" as follow picture



B. The AP mode with internet

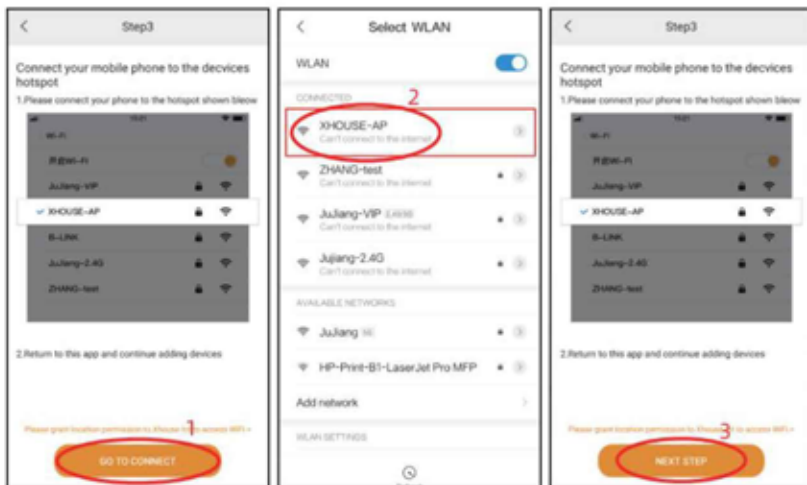
Please press the + on the right top corner and Choose AP mode , click "NEXT STEP"



Press the SMART button on EGB-10 control board about 10seconds , indicator light flashes fast and slowly , then release the button and enter the network configuration mode.

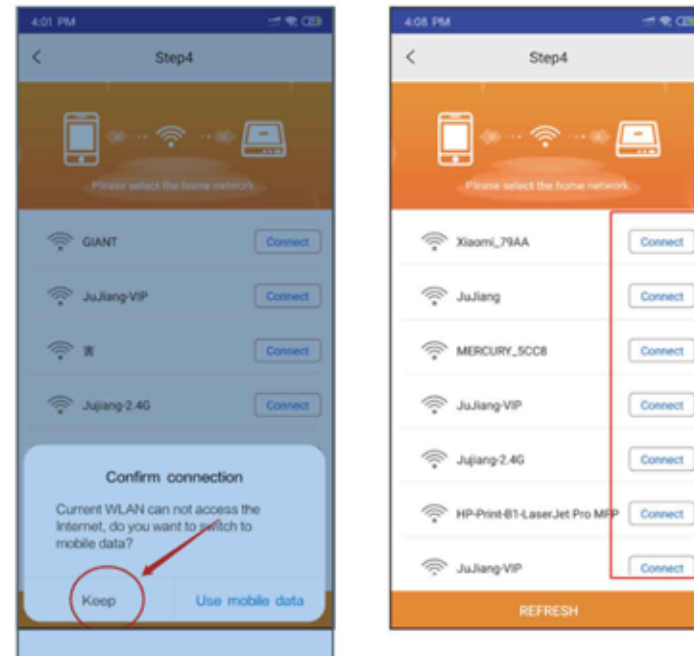
Click "Next step"

Click"GO TO CONNECT" then choose the "XHOUSE-AP" on select WLAN list of your mobile phone and stay the connected state ,after that , go back XHOUSE IOT APP and click "NEXT STEP"



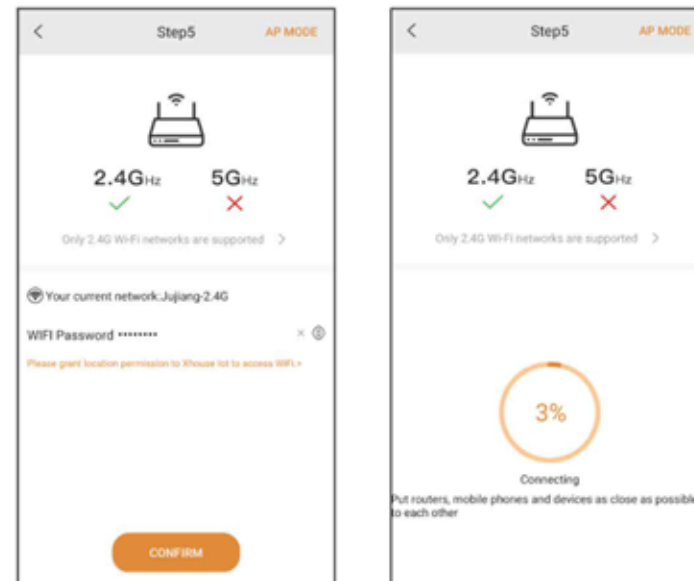
Choose your own home net work wifi do fo connection

Remarks: If it show "confirm connection",please click "keep"



Type in your own wifi password , then press "confirm", It will start to do network configuration .

Remark: If your wifi name did not show out in the select wlan list ,plese check and open XHOUSE iot APP location authority



C. Successfully added

The device will check the status of gate in real-time, and users can clearly know whether it is currently open or closed.